

## **Ecografo Voluson S10 Expert Ricondizionato UFFICIALE GE 2023**

completo di :

- Sonda Convex Volumetrica 3D Rab6D
- Sonda Endocavitaria Volumetrica Ric5-9D
- RadiantFlow
- Hdlive
- HDlive Silhouette
- Advanced 3/4D
- Stampante Termica Sony

**A partire da 680 Euro + Iva / Mese**

GE Healthcare

# Voluson S10

*Extraordinary Vision*



# WIDEN YOUR PERSPECTIVE

Patient demands and time pressures are high. To succeed, your practice requires exceptional and efficient imaging services – helping you to provide answers to your patients while managing your capital investments. GE Healthcare Women's Health ultrasound continues to develop products that help you manage your day while delivering quality patient care.



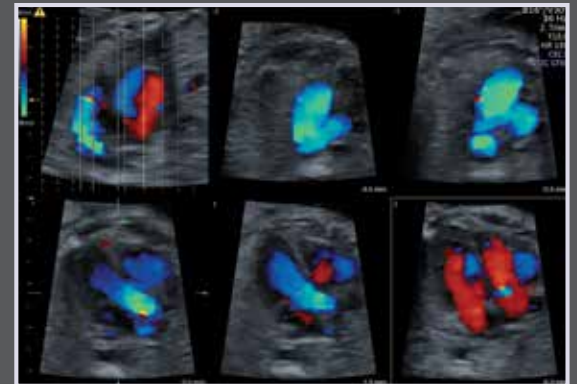
With the Voluson™ S10, we continue to deliver on this mission. From the power of the Voluson Core Architecture to its intuitive system design, the Voluson S10 brings you even more of what you need in ultrasound for OB/GYN applications including:

- **More confidence:** Outstanding image quality, automated measurement tools and easy to use volume imaging help you detect and diagnose problems with more confidence
- **More image information:** the large Voluson S10 monitor displays 98% more image information than previous Voluson Signature Series models allowing you to see more for increased diagnostic confidence
- **More workflow speed:** the Voluson S10's intuitive system design helps reduce keystrokes and keeps critical key functions at your fingertips so that you can focus on patient and practice demands
- **More scanning efficiency:** Four active probe ports provide easy access to ultra-lightweight probes at the touch of a button

Combining decades of experience in women's imaging with forward-thinking technologies, the Voluson S10 offers both clinical excellence and true investment value for the advanced ultrasound user.



Excellent detail and contrast resolution in fetal diaphragm



Easy to use STIC color for confident fetal heart assessment



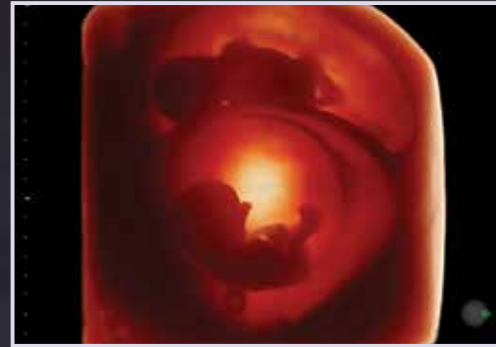
Automated render line and exceptional realism of HDlive

# Uncover the answers

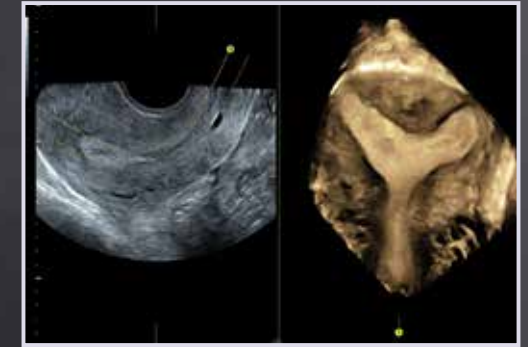
Helping patients find the answers they seek is at the heart of your practice. Built on GE's powerful Voluson Core Architecture, the Voluson S10 provides exceptional image quality and advanced capabilities across a wide range of applications helping you make critical clinical decisions with confidence and helping you stay at the forefront of women's health imaging. Utilizing common hardware elements and software across the Voluson portfolio, the Voluson S10 provides:

- Superb 2D images – optimized for clarity and detail
- Advanced color Doppler to assist you in assessing vascular anatomy and function
- Exceptional penetration with consistent image quality to address your most difficult to image patients
- Easy to acquire 3D/4D imaging to provide more information and assist in patient communication

## Advanced Image Quality Tools:



**HDlive™** – helps provide 3D and 4D images with exceptional anatomical realism.



**Advanced VCI with OmniView** provides exceptional clarity in any image plane, even when viewing irregularly shaped structures.



**HD-Flow™** – Highly sensitive Doppler technology with directional information.



Easy to acquire 3D/4D with enhanced depth perception.

# Focus on what's important

Time management is key to your day. The Voluson S10 can help you keep focus on what matters – the patient, instead of rescans and optimization. Our next-generation technologies help increase efficiency by streamline the exam process and enhance department workflow.

## Measurement techniques that help reduce keystrokes and provide measurement consistency:

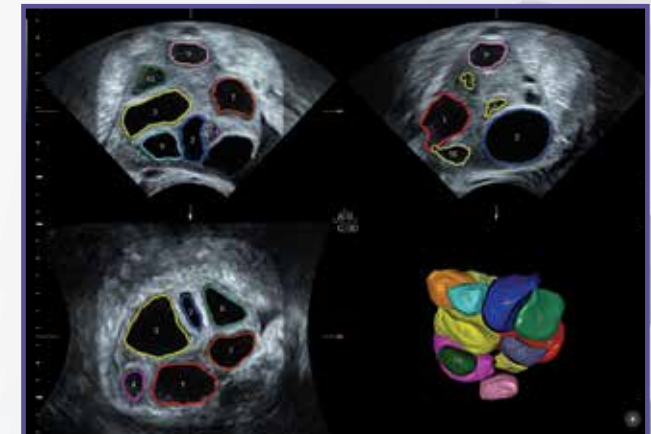
- **SonoRender*live*** simplifies volume rendering by automating renderline placement in 3D and 4D imaging
- **SonoVCAD™*heart***, provides six different planes of the fetal heart from one volume acquisition with the touch of one button



SonoBiometry – semi-automated abdominal circumference



SonoNT – semi-automated nuchal translucency measurement



SonoAVC*follicle* - semi-automated count and measurement of stimulated follicles

- **SonoBiometry** – Performs semi-automated biometry measurements (BPD, HC, AC, FL and HL)
- **SonoNT** (Sonography-based Nuchal Translucency) and **SonoIT** (Sonography-based Intracranial Translucency) – Provides semi-automatic, standardized measurements of the nuchal and intracranial translucencies in the 1<sup>st</sup> trimester
- **SonoAVC™** (Sonography-based Automated Volume Count) – Innovative tool helps provide visualization and measurement of hypoechoic structures within anatomy such as ovarian follicles, or fetal brain.

## Wide selection of specialty probes.

Choose from a wide range of advanced 2D and 3D probes designed for outstanding image quality with minimal user interaction. Just place the probe and quickly obtain images for use as you provide your patient answers. And their light weight enhances both user and patient comfort.

# Advanced ergonomics, from panel to ports

The sleek Voluson S10 system is a delight to use, with a design that seems to instinctively draw your hand to the right control. You can keep your eyes on the images and your patient, not on menus and buttons.

- 10.1-inch touch panel – simplifies workflow with the responsiveness of a tablet
- Navigate menus with a swipe. Navigate functions with a touch. It's easy and familiar
- One button control to adjust both the control panel height and rotation for optimal ergonomics
- AutoTGC – quickly fine-tunes image brightness and contrast with a touch
- Four active probe ports – with more probes ready to go, you can reduce exam disruptions



**23-inch widescreen LED monitor** – This high-definition monitor delivers 98% more image information than our previous Voluson Signature Series monitor – images come to life and it helps you see tiny details clearly. The layout is customizable and you can view measurement data and images side-by-side for comparison and trending.

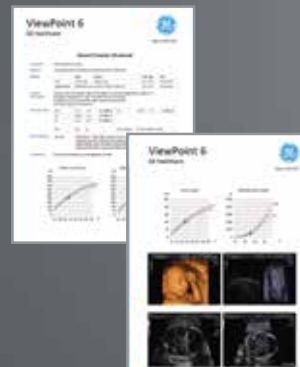


# Connect with patients

At the center of effective care delivery is a connection between provider and patient. With the Voluson S10, sharing the findings with patients and colleagues is extraordinarily easy – and secure:

- Text or email images to patients directly from the console, for an instant connection that enhances patient satisfaction
- Share encrypted images and reports with referring physicians and colleagues securely via email or export from the console

With one of our powerful ViewPoint™ ultrasound data management solutions you can help streamline your workflow, giving you those extra minutes to connect with your patient. Efficient digital connectivity gives you freedom and flexibility, and helps improve the archiving of images, volumes and structured reports.







# Invest in your future

Over the years, clinician feedback has fueled our technology advances, helping to make GE Healthcare a leader in women's health ultrasound. The Voluson S10 reflects that continuing evolution, from its exceptional image quality to ergonomic improvements that help improve the exam experience for users and patients alike.

Look beyond the exceptional capabilities of this system and you'll find exceptional support as well, including:

- Probe protection and financing to help meet your budget goals
- Reliable, responsive service to keep your system performing well, day after day, so you can maintain your schedule and protect your investment
- Access to system upgrades so your system can grow in capabilities as your practice grows
- Membership in the Voluson Club, our global users' community, with access to educational resources and peer-to-peer best-practice sharing to help you get more from your system at your convenience ([www.volusonclub.net](http://www.volusonclub.net))



## Imagination at work

[www.gehealthcare.com](http://www.gehealthcare.com). Product may not be available in all countries and regions. Contact a GE Healthcare Representative for more information.

Data subject to change.

© 2016 General Electric Company.

GE, the GE Monogram, imagination at work, Voluson, ViewPoint, HD*live*, HD-Flow, SonoAVC, and SonoVCAD are trademarks of General Electric Company.

Reproduction in any form is forbidden without prior written permission from GE. Nothing in this material should be used to diagnose or treat any disease or condition. Readers must consult a healthcare professional.

### GERMANY

GE Healthcare GmbH  
Beethovenstr. 239  
42655 Solingen  
T +49 212-28 02-0  
F +49 212-28 02-28  
[www.gehealthcare.com](http://www.gehealthcare.com)

### UNITED KINGDOM

GE Medical Systems Ultrasound  
71 Great North Road  
Hatfield, Hertfordshire  
AL9 5EN  
T +44 1707 263570  
F +44 1707 260065

February 2016

JB37426XXc

300-16-U029E